

**GENERALTIRE** ™

# GRABBER™ ARCTIC LT

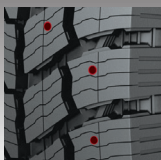


## STUDDABLE WINTER TIRE FOR LIGHT TRUCKS AND SUVs IN LT-METRIC SIZES

A durable, innovative, light truck studdable winter tire with outstanding low temperature traction in snow, ice and wet conditions.



3-Peak Mountain  
Snowflake  
Certification



Studdable  
Design

**DURAGEN**  
  
TECHNOLOGY

High Tech body  
reinforcements  
provide confident  
stability under all  
load conditions.

**GENERALTIRE.CA**

# FEATURES + BENEFITS

**DuraGen™:** Cut and chip resistant compound, coupled with ultra-high strength steel belts and a broad, flat contour, provide confident stability, even wear and responsive handling.

**Symmetrical Pattern:** Allows for the most flexible tire mounting and rotation options, promoting even tread life and is ideal for fleet usage.

**Snow Traction Ridges:** Provides additional deep snow grip during cornering, braking and acceleration.

**Interlocking Light Truck Winter Sipes:** Exceptional grip in snow, ice and wet conditions while providing stable handling and strong braking on dry surfaces.

**Studdable:** Allows optional aftermarket stud application for added ice traction.

**Stepped Reinforcement Bars:** Strengthens the shoulder, improving handling and braking in all weather conditions, while the stepped ridges provide additional deep snow grip.

**Tread Block Reinforcement Buttress:** Adds strength and stability to tread blocks to provide improved handling dynamics and optimized wet and dry braking performance.

**45 DAY** Customer Satisfaction Trial

For the latest information regarding tire size availability, please refer to our website at [www.generaltire.ca](http://www.generaltire.ca).

©Continental Tire Canada INC, 2020. All rights reserved.



[www.GENERALTIRE.CA](http://www.GENERALTIRE.CA)